



### Inside this Issue:

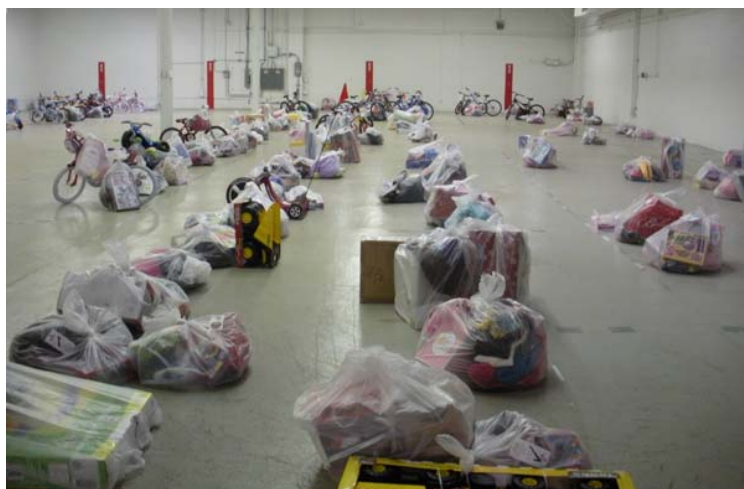
Golf Results.....	Page 2
January GTN Vendors, Skiing, ERWAYS.....	Page 3

## Angel Tree Gifts Delivered to Salvation Army

ERWA would like to thank our DOE family for participating in the Salvation Army's Angel Tree Program. At the Germantown facility, the ERWA shop and a spare room were filled with gifts that will make 120 local children smile and have a wonderful Holiday. And we are sure our Angels from the Forrestal collection will also benefit from the thoughtfulness of our employees and contractors.



Just half of the wonderful gifts collected at DOE Germantown. This is what generosity looks like.



Sorted packages at the Salvation Army's warehouse facility. During this time, the Salvation Army could use volunteers to help sort out the packages. If you would like to volunteer to help next year or if your children are looking for community service hours, sorting the gifts for the little Angels can be a fun and rewarding experience.

# HAPPY NEW YEAR!

## ERWA Board of Directors Elections 2010

It's that time again! ERWA Board of Directors Nominations are Open! We have four positions up for election for 3-year terms (incumbents are noted in parenthesis).

Director and Germantown Office Manager and Volunteer Coordinator (Sam Baughman); Secretary (Connie Magers); Director and Seminar Coordinator (Mary Williams); Director and Discount Programs and Sales Coordinator (Cheryl Yost).

To be considered for one of these positions, send a letter stating your willingness to serve and what abilities you would bring to ERWA.

Include a brief description of your qualifications and background.

Nominees should be members in good standing with ERWA. Nominations will be accepted until January 19, 2010. Please send nomination letters to ERWA Nominations, Room E-066, Germantown.



Loading up the truck-ERWA would like to thank the MA moving crew who loaded up the presents and transported them to the Salvation Army warehouse. ERWA could not load up this many gifts and bicycles without their help!

## DOE/ERWA Fall Classic Tournament: Featuring Excellent Play and a "Hole in One"

By John Panek

Several ERWA golfers displayed an impressive array of golfing skills and definitely proved up to the challenge this year at the ERWA Fall Classic Tournament held at Worthington Manor Golf Club on October 19th. In a performance for the ages and rivaling that of Tom Watson at the British Open this year, Tony Dammer (DOE/FE retired) emphatically demonstrated why retirement can reinvigorate and may be the best tonic for any golf game. Tony scored an ace on the difficult 8th hole using a 6 iron from 175 yards. Tony then proceeded to combine power and accuracy to win the Men's Long Drive on the 9th hole and another closest to the pin, 5'9" away on the exacting 188 yard 17th hole. This extraordinary play helped lead the team of Tony Dammer, Mark Matarrese and Bob Porter to a third place finish with a superb 8 under par score of 64.

Always a perennial contender, the team of Tim (I carried them on my back all day) Fox, John Wells and Rich Updegrove (who maintained they carried Tim on their backs and at a minimum had to put up with Cleveland sports stories all day) fired a 63 and won the event in a tie breaker with the 2nd place team of Troy O'Baker, Sean Gamage, Dave Wagner and Frank Wagner also posting a stellar 63. The winning mixed team was Pete Herz, Keller Staley and Dale and Eileen Stubenrauch. Sean Gamage won the closest to the pin at 6'9" on the signature 6th hole and Lyn Henderson won closest to the pin on at 8'2" on the 15th hole. Eileen Stuberauch won the long drive for women on the 16th hole.

A fine day was had by all with several door prizes won at the awards ceremony during the swapping of stories of shots and putts that got away as well as appetizers and beverages. Congratulations to Tony Dammer on the hole in one and sparkling play which set a remarkable standard for the tournament (We did however note in the finest of traditions that a hole in one is not truly validated until he buys a round for all those in the clubhouse or at least his playing partners and the tournament director.) Thanks again for all who participated and who continue to make this an exemplary golfing competition but more importantly an extremely fun event for all.



**1st Place Team:** John Wells, Tim Fox, Rick Updegrove



**Low Mixed Group:** Pete Herz, Keller Staley, Eileen and Dale Stubenrauch



**3rd Place:** Bob Porter, Tony (Mr. All Tournament) Dammer and Mark Matarrese


## Are You Missing Out?

Did you know by joining ERWA you can receive your newsletter as soon as it's completed? Why wait for the printed copy when the newsletter can be delivered to you electronically? By joining, you will have access to information on our special programs and deals! Stop by either the Germantown shop (W-F, 11:30-1:30) or Forrestral shop (Th, 11:30-1:30) to see what we have to offer!

## GTN January Vendors

**Note: (FORS Vendors not available at this time)**

- 1/5 NEW VENDOR - Nicole Lewis, Our Butterfly Effects Candles
- 1/6 Marla Sabin, Sparkling Ideas
- 1/7-8 Beth Taylor, Bella Jewelry
- 1/11-12 Sidney Katz, Katz International - Leather and Cold Weather Accessories
- 1/13 Harry and Carrie Fisher, Fisher Apparel
- 1/14 Michele Drayton, Park Lane Jewelry
- 1/15 Yvonne Prevost, Mary Kay
- 1/19 Marla Sabin, Sparkling Ideas
- 1/20 Hebe Wiseman, Jewelry
- 1/21 Jit Gidda, Mens and Womens' Accessories
- 1/22 Lorraine Fowlkes, Tastefully Simple
- 1/25 Jessie Kretzer, Arbonne Skin Care
- 1/26 Patricia Johnson, Jewelry
- 1/27 Josie Cooper, Sports Accessories and Jewelry
- 1/28 Nancy Nicola, Pursenalities
- 1/29 Yvonne Prevost, Mary Kay



Cold weather and frost on the wind shield are no problem with this small ice scraper. It is designed to fit over the visor and also will fit in most consoles so no hunting under the seat or delving into the trunk. Available at the ERWA Offices for \$2.00.

## More Skiing ... More Snow

For the first time ERWA is adding discount tickets to the ski slopes at Timberline Resort in Davis, West Virginia (approximately 3.5 hours from DC). Nestled in a picturesque valley high in the Allegheny Mountains at an evaluation of 4,000 feet and 150-200 inches of annual snowfall, this resort offers some of the best skiing in the Mid-Atlantic. Along with the natural snowfall and large snowmaking system, Timberline assures "Real Snow Country" conditions for skiers and snowboarders. The season begins NOW thru 1st week of April).

The Herz Mountain includes 2 km marked cross country trails, 37 slopes and trails (34% Easiest, 34% More Difficult, 32% Most Difficult/Expert Only), Longest Run 2 miles; 2 terrain parks, 4 lifts; and skiing capacity of 5,000 skiers per hour. Skiers and snowboarders of all abilities will enjoy exploring Timberline's trails and terrain parks.

Timberline Four Seasons Resort and Hotel and Suites is located at the base of the mountain slope and is the area's only ski in ski out hotel facility. For more information on the hotel and resort visit their website at [www.timberlinerestort.com](http://www.timberlinerestort.com). ERWA pricing is as follows:

	<b>Our Price</b>	<b>Retail Prices</b>
Weekend/Non-Holiday Adult	\$43.00	\$57.00
Weekend/Non-Holiday Adult Lift w/Rental	\$70.00	\$84.00
Midweek/Non-Holiday Adult Lift	\$31.00	\$37.00
Midweek/Non-Holiday Adult Lift w/Rental	\$56.00	\$62.00
Learn to Ski Package	\$48.00	\$62.00

Check out this great winter adventure destination.

## Take A Snow Day

For all you snow bunnies out there it is that time of year again. Whether you enjoy skiing, snow boarding, or snow tubing; or if you are just a beginner or an experienced skier ERWA's discount tickets to Whitetail, Roundtop, and Liberty Mountain are great for taking a day off from your winter routine and enjoying the snow.

What's new at these resorts this year? Whitetail ([www.skiwhitetail.com](http://www.skiwhitetail.com)) has 24 new snowmaking fan guns which mean better snow, a new half pipe, new beginner terrain park, and a new 400 ft beginner adult magic carpet lift. Roundtop ([www.skiroundtop.com](http://www.skiroundtop.com)) has a new Fireside Pub & Grill; the terrain park has been widened to accommodate both park and traditional use; the Recruit mogul run is open again with a large mogul field and a groomed area; and have built a deck at the base of the Minuteman which will house the Minuteman Café. Liberty Mountain ([www.skiliberty.com](http://www.skiliberty.com)) has improved their lodge and eating area; they have increased the number helmets available for rent; added additional snowmaking guns for better snow; added a new quad chairlift; and added a progression terrain. This year's tickets prices are as follows:

	<b>Our Price</b>	<b>Retail Price</b>
Weekend/Holiday 8 Hr Lift	\$48.00	\$56.00-\$59.00
Weekend/Holiday 8 Hr Lift w/Rental	\$86.00	\$91.00-\$105.00
Midweek/Non-Holiday 8 Hr Lift	\$35.00	\$47.00-\$49.00
Midweek/Non-Holiday 8 Hr Lift w/Rental	\$73.00	\$82.00-\$95.00
Night Lift (valid after 5 pm)	\$28.00	\$38.00
Night Lift w/Rental	\$66.00	\$73.00-\$84.00
Learn to Ski or Snowboard Package	\$66.00	\$70.00-\$83.00
2 Hour Weekend/Holiday Tubing	\$22.00	\$24.00
2 Hour Mid-Week/Non-Holiday Tubing	\$17.00	\$18.00-\$19.00

# The Advertiser

## CARPOOLS/VANPOOLS

Vanpool startup, Save \$\$\$ / eco friendly, Riders/drivers needed: Charles Town, WV or Brunswick MD, residents, Meeting places:, Oakland church, Charles Town, WV, Park n ride, Brunswick, MD (off rt 340, exit#1, Knoxville, MD), Times: Eta GTN 7am, Eta GTN 4:30pm. Contact: Janet Tatterson at 304 261-4092.

Van Pool Riders Wanted! Laurel, MD (BW Parkway & Rt. 197) Mall Area, Washington DC. Depart Laurel 6:45AM, Arrive Laurel 5:50-6:10PM Contact Shirley 202 586-2218. METRO CHECKS ACCEPTED AS PARTIAL PAYMENT!

CP needs driver/rider from Reston to FORS, 7-4:30 AWS, Jim 7-1370.

CP Hagerstown for FOR, 6:30-4:00 Jim 6-4441 or Peter 6-8116.

CP seeking rider/driver from either Sydenstricker or Rolling Valley Park and Ride (Burke/W. Springfield) to For-

restal. 7:00-4:30, first Friday off. Call Elise 6-7239 or Tom 6-3276.

CP needs rider/driver from Frederick to FORS, 7-4:30 AWS, Melinda 6-0012.

## FOR SALE

David White Construction Level: \$85. Precision optical tool for laying out your construction project, leveling foundations, floors, pipes, walls, turning corners, setting grades, etc. Made in USA model. Can bring to GTN. Tom Anderson, 301 831-8674.

For Sale - County Competitor Dressage Saddle, 17", wide tree. \$650. 803 439-4899.

For Sale: 3 piece living room furniture. (1) loveseat (1) sofa/pull out bed and (1) large Chaise lounge, color: mint green with multi-colored large pillows. Interested please call: 301 503-2846

Cutco Cutlery: the world's finest cutlery. Kitchen knives, sets, flatware, sport knives, and more. Contact Jessie Dorsey, 301 991-1423, for a demo.

100% Alpaca Bears and yarn for sale, natural colors. Personalized Golf Markers (pewter) In stock only \$4, Lisa Ger-

man 301 829-0599.

## SERVICES

Dog Walking: Bonded and Insured couple available for mid-day dog walks/pet sitting. References available. Call 301 540-7292 for more info.

Stork Express: Announce the arrival of a newborn in a BIG way! 7 ft. tall lawn storks with personalized keepsake bundle, delivery included. Call 301 540-7793 for more info.

## HOMES/Vacation - Sale/Rent

ROOM FOR RENT: GTN area 1 1/2 miles to DOE, Room Unfurnished, Pvt BA, N/Pets. \$500 mo. call for details: 240-277-6966

Must sell Timeshare with Wilderness Presidential Resorts Call Marissa @ 301 748-1659 for details, asking \$8000.

Must sell Timeshare with Wildness Presidential Resorts. Call Agnes @ 301 952-1454 for details, asking \$4000.

A New Year's resolution is something that goes in one year and out the other. - Anonymous

## ERWA ADMINISTRATIVE CONTACTS

**ERWA President:** Ruth Watkins

**ERWA Offices:** Germantown; E-101, 301 903-5440 Wed., Thurs., and Fri. 11:30 am to 1:30 pm, Forrestal; GE-139, 202 586-0330, Thurs., 11:30 am to 1:30 pm

**Mailing Address:** USDOE, ERWA, Room E-101, 19901 Germantown Road Germantown, MD 20874, or 1000 Independence Avenue SW, Washington, D.C. 20585-1290

**FORS Directors:** Shirley Cambrel at 202 586-3173 or Deborah Bullock at 202 586-2126.

**ERWAYS Editor:** E-066 GTN or ERWA@hq.doe.gov

## ERWA Club and Activity Contacts

**Travel** Nancy Dowicki 301 903-6570 GTN

**Toastmasters** Dan Marsick 301 903-3954 GTN, Eric Thomas 202 586-2242 FORS

**Vendor Hotline** 301 903-1222 GTN

**Softball** Joe Gazda 202 586-2075 FORS

**Golf** John Panek 301 903-4295 GTN

**Chess Club** John Dowicki 301 903-7729 GTN

"DOE and ERWA do not endorse products or services advertised in ERWAYS nor endorse or guarantee products purchased from lobby vendors."



This publication is printed on recycled paper

## ERWA HOTLINE 301 903-8500

### How to Submit Ads & Articles

Due to a shortage of space CP/VP and other continuously running Ads may NOT always appear in each issue. Please try to limit ALL Ads to three issues and be as brief as description allows. Also, if your continuously running Ad (CP/VP for example) is no longer needed, let us know.

Office phone number for CP/VP ads & gov. business ONLY. Home number ONLY for personal ads—INCLUDING AREA CODE. Personals run one issue, then must be re-submitted. For Ads and Articles please send Disk in MS WORD or Word Perfect with any WP file extension (example AD.WP5 or WP6), send E-mail to ERWA@hq.doe.gov, or typed legible copy to: Editor, E-066/GTN. Include your name & current ERWA membership number. Your disks will be returned asap. **NEWSLETTER DEADLINE IS ONE MONTH IN ADVANCE** (e.g., Jan. 1st for the Feb issue). - ED.

## U.S. Department of Energy Energy R & W Association Membership Application

Name \_\_\_\_\_

Phone # \_\_\_\_\_ Rt. Sym. \_\_\_\_\_

Duty Station (Bldg.) \_\_\_\_\_

Send \$4.00 & this completed form to:

ERWA Membership, E-066 GTN.

Membership good for 1 year from issue date.